

Chart showing the geographical areas of the intended work and the location of sampling stations, the tracks of survey lines

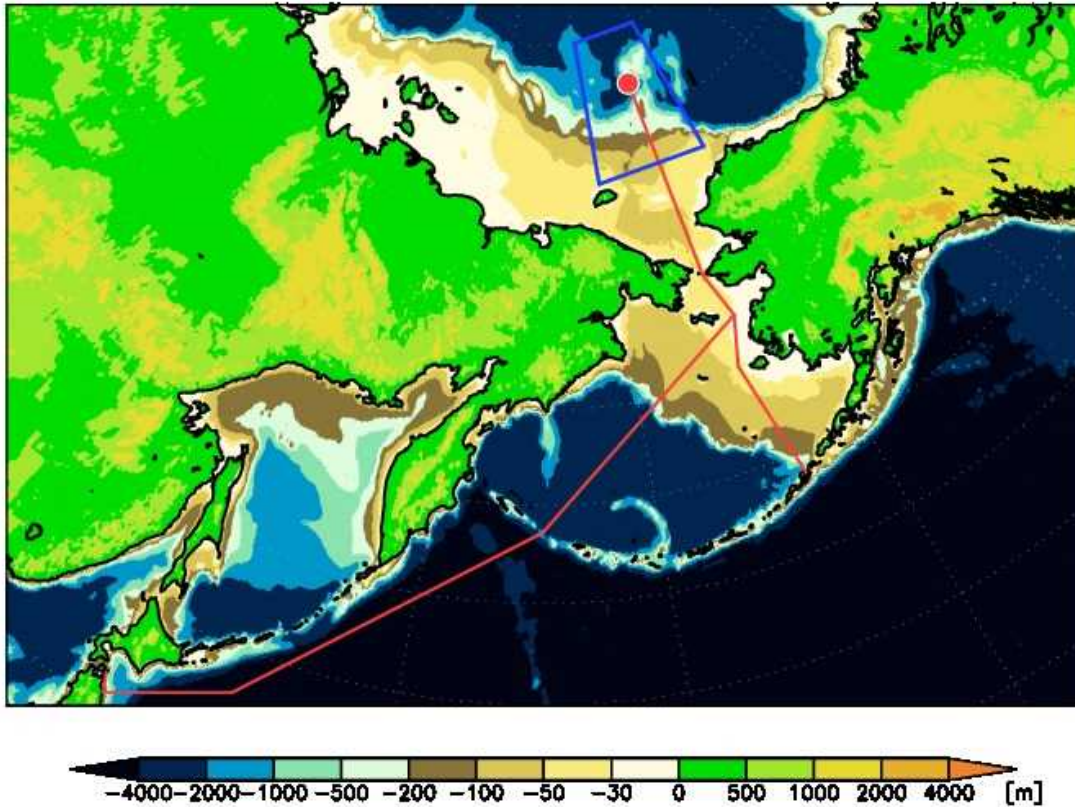


Figure 1. Map of research area with cruise track from Dutch Harbor to Hachinohe via the Arctic Ocean (red lines is the tentative cruise track). The research area in the Arctic Ocean and Bering Sea includes the EEZs and territorial sea of the United States of America. The ship will go to the stationary observing point at 77°N, 168°W, and stay almost 3 weeks (indicated by a red dot). The position of the stationary observing point is subject to change due to sea-ice and other conditions within the area indicated by blue lines (72-80°N, 160-180°W).